



SUBMISSION OF ERADICATION PROGRAMMES FOR CATEGORY C DISEASES OF AQUATIC ANIMALS

Member States shall include at least the scope of the information set out below for eradication programmes for Category C diseases of aquatic animals in accordance with [Chapter 3 of Part II of Regulation \(EU\) 2020/689](#) and [Article 10 of Commission Implementing Regulation \(EU\) 2020/2002](#).

Requirements and information	Information, explanation and justification
Identification of the programme	
1. Date of submission	13 June 2022 Updated 23 June in table of animal health visits and sampling
2. Name of Member State and details of contact point	Denmark Danish Veterinary and Food Administration (DVFA), Stationsparken 31-33, 2600 Glostrup. Phone: +45 72276900. E-mail: 14@fvst.dk
3. Name of Category C disease	IHN – Infectious Haematopoietic Necrosis
4. Territorial scope with a description and demarcation of the geographical and administrative areas covered by the eradication programme and the names of the zones or compartments	(b) Compartment as defined in point (37) of Article 4 of Regulation (EU) 2016/429, which cover less than 75% of the territory of a Member State, and where the water catchment supplying the zone or compartment is not shared with another Member State or third country. <u>Address:</u> Frøerlundsvej 2 Rold 9510 Arden Denmark CHR: 103554

	<p><u>Coordinates:</u> Latitude: 56.77 Longitude: 9.78</p> <p><u>Farm details:</u> Farm production: Brood stock Water supply: Fount inside the compartment Discharge of effluents: Stream</p> <p><u>Farm productivity:</u> Brood stock: 3,800 (kg/y) Nursery : 1,950 (kg/y)</p> <p><u>Description of compartment:</u> The establishment consists of 2 hatcheries, 15 ponds, 5 intermedia ponds, a sedimentation pond, and 2 root zone plants.</p>
<p>5. A description of the epidemiological situation for each zone or compartment included in the territorial scope of the programme:</p>	
<p>a. The number of approved aquaculture establishments and the number of registered aquaculture establishments keeping animals of the targeted animal population, by health status (non-infected, infected, unknown)</p>	<p>There is one approved establishment in the compartment. It is not infected.</p>
<p>b. Details of the listed species of the targeted animal population kept in the establishments referred to in point (a)</p>	<p>Brown trout (<i>Salmo trutta</i>), brook trout (<i>Salvelinus fontinalis</i>), arctic charr (<i>Salvelinus alpinus</i>) and hybrids of arctic charr and brook trout.</p>
<p>c. Maps indicating:</p>	
<p>i. The geographical location of the aquaculture establishments referred to in point (a) and the relevant water catchment areas</p>	<p>See map below.</p>

<p>ii. The geographical distribution of cases of infection with the relevant Category C disease covering at least the past 5 years</p>	<p>See map below.</p>
<p>6. A description of the disease control strategy of the eradication programme in accordance with Article 46 of Delegated Regulation (EU) 2020/689, including at least:</p>	
<p>a. Details of the sampling schemes and diagnostic methods to be used in accordance with the relevant chapter of Part II of Annex VI to Delegated Regulation (EU) 2020/689 for:</p> <p>i. Health visits and sampling in aquaculture establishments</p>	<p>See table below. Test method according to Delegated Regulation (EU) 2020/689, Annex VI, Part II, Chapter 1, Section 5. The tissues will be tested using RT-qPCR and/or virus isolation in cell culture with subsequent identification of the virus using ELISA.</p> <p>The organs or tissue material to be sampled and examined must be the spleen, the anterior kidney, and either heart or encephalon. When sampling broodstock, ovarian or seminal fluid may also be examined. In case of small fry, whole fish may be sampled. Samples from a maximum of 10 fish may be pooled.</p>
<p>b. The disease control measures to be applied in the event of a confirmed case</p>	<p>In the event of a confirmed case, the DVFA will initiate control measures according to Delegated Regulation (EU) 2020/689, articles 58-64.</p>
<p>c. The biosecurity and risk mitigating measures to be implemented</p>	<p>The compartment is protected from aquatic animals with two 10 mm drain traps, and a sedimentation pond to which the water is led through piping with a 1.5 m drop.</p> <p>The compartment is located 6 m above the nearby stream Holmen. In the last 30 years, the owner has not observed any flooding.</p> <p>The fishponds are protected by nets and fence, preventing birds and land animals from entering the ponds. Surveillances camera are installed on the establishment.</p>

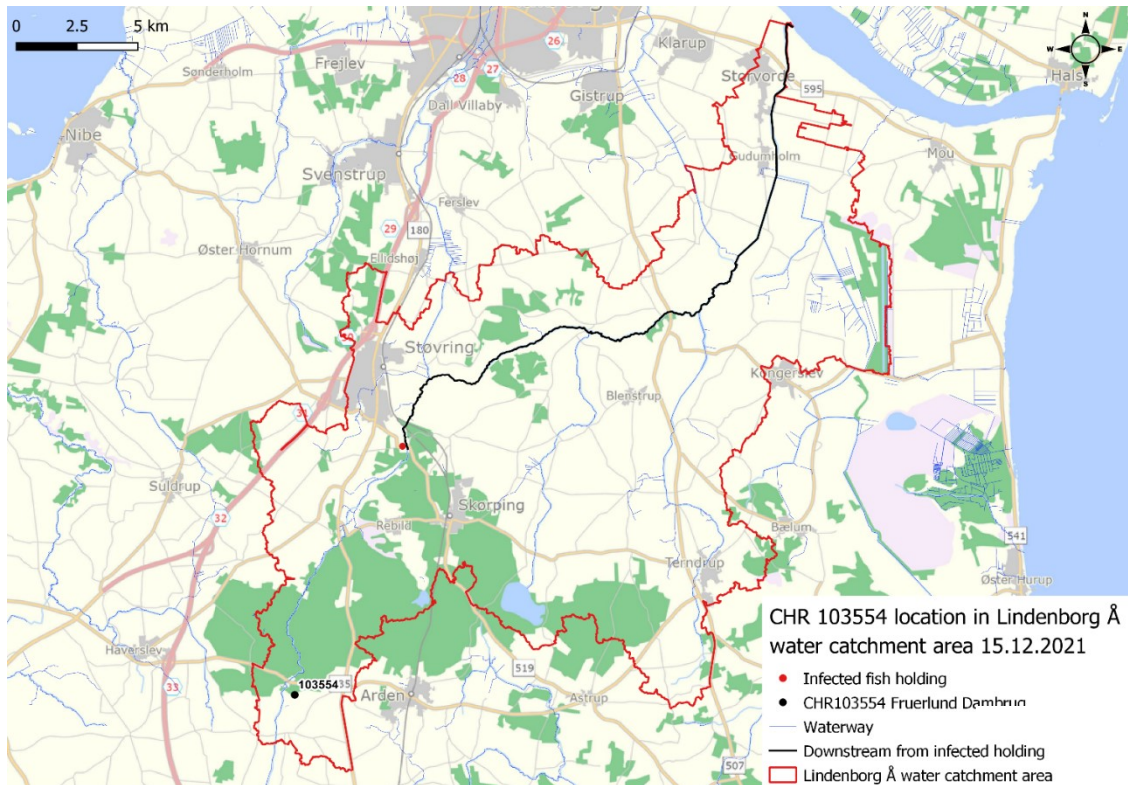
	<p>The compartment is taking measures to prevent rats.</p> <p>The compartment has a contingency plan and a biosecurity plan, where it is described how to disinfect and change clothes and footwear, before entering and leaving the compartment. Disinfection also applies to vehicles, and equipment used for transport.</p> <p>The compartment has a disinfection plan for eggs, including when disinfection internal in the compartment and before transport out of the compartment.</p>
<p>7. A description of the organisation, supervision and roles of the parties involved in the eradication programme including at least:</p>	
<p>a. The authorities in charge of coordinating and supervising the implementation of the programme</p>	<p>The Danish Veterinary and Food Administration.</p>
<p>b. Responsibilities of all stakeholders involved</p>	<p>The owner of the establishment in the compartment is responsible for maintaining a high level of biosecurity. The Danish Veterinary and Food Administration is responsible to perform health visits and sampling.</p>
<p>8. The estimated duration of the eradication programme</p>	<p>Two years.</p>
<p>9. The intermediate targets of the eradication programme including at least the expected: a) Annual decrease of the number of infected aquaculture establishments and where relevant, sampling points in wild populations</p>	<p>It is expected to keep IHN out of the establishment in the compartment.</p>

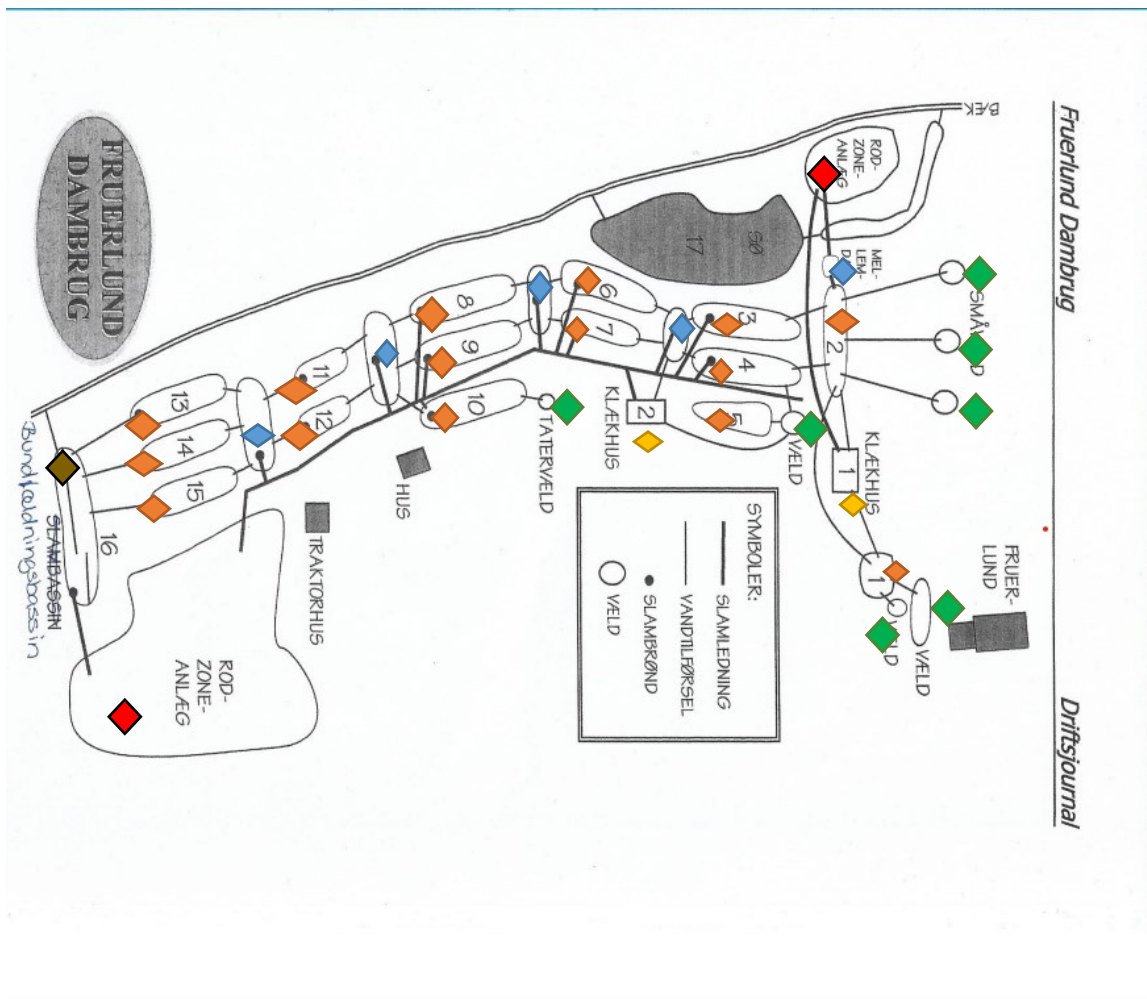
Table of animal health visits and sampling

Health visits	Samplings	Animals tested per sampling		Water temperature at sampling
2*	2*	Number of growing fish	Number of broodstock	14 °C or below
		50 (first visit) 75 (second visit)	30 (first or second visit)	

* Per year, at least.

Map of compartment and location in Denmark:





- ◆ Jorddam: Pond
- ◆ Klækkehus: Hatchery
- ◆ Mellemdam: Intermedia pond
- ◆ Kilde: Inlet
- ◆ Bundfældningsbassin: Sedimentation pond
- ◆ Rodzoneanlæg: Root zone plant